



**DECISION OF THE GOVERNING BOARD OF THE ARTEMIS JOINT  
UNDERTAKING AMENDING DECISION ARTEMIS-GB-2011-D.35 ON THE JOINT  
UNDERTAKING'S BUDGET FOR 2012**

THE GOVERNING BOARD OF THE ARTEMIS JOINT UNDERTAKING,

Having regard to the Statutes annexed to Council Regulation (EC) No 74/2008 of 20 December 2007 on the establishment of the 'ARTEMIS Joint Undertaking' to implement a Joint Technology Initiative in Embedded Computing Systems<sup>1</sup>, and in particular Articles 6(2)(h), 18 and 19 thereof;

Having regard to Decision ARTEMIS-GB-2011-D.34 adopting the Joint Undertaking Annual Implementation Plan for 2012;

Having regard to Decision ARTEMIS-GB-2011-D.35 adopting the Joint Undertaking budget for 2012;

Whereas:

- (1) The Annual Implementation Plan for 2012 mentions a different Community contribution to the budget for R&D activities for 2012 as the one mentioned in the initial budget;
- (2) The Annual Budget should therefore be modified to be in line with the AIP;

HAS ADOPTED THIS DECISION:

*Article 1*

The amended Joint Undertaking's Budget for 2012, as annexed to this Decision, is hereby adopted.

*Article 2*

This Decision shall enter into force upon its adoption by the Governing Board.

---

<sup>1</sup> OJ L 30, 04.02.2008, p. 52.

Done at Brussels, 25 January 2012

For the Governing Board

*(signed)*

Klaus Grimm  
Chairperson of the Governing Board

Annex: budget for 2012

**TABLE OF CONTENTS**

- 1. Introduction..... 6**
- 2. Revenue ..... 6**
  - a) Revenue for R&D Activities ..... 6
  - b) Receipts for running costs ..... 6
- 3. Expenditures..... 7**
  - a) Research and Development (R&D) activities (Budget Title 3)..... 7
  - b) Running Costs ..... 8
  - Title 1: Staff ..... 8
    - *Staff (Budget Title 1 Chapter 11)* ..... 8
    - *Recruitment costs (Budget Title 1 Chapter 12)*..... 8
    - *Training (Budget Title 1 Chapter 14)* ..... 8
    - *Missions and representation (Budget Title 1 Chapter 17)*..... 8
  - Title 2: Building and Equipment ..... 9
    - *Building and associated costs (Budget Title 2 Chapter 20)* ..... 9
    - *IT equipment and services (Budget Title 2 Chapter 21)*..... 9
    - *Movable property (Budget Title 2 Chapter 22)*..... 9
    - *Current administrative expenses (Budget Title 2 Chapter 23)*..... 9
    - *Telecommunications (Budget Title 2 Chapter 24)* ..... 9
    - *R & D Support (Budget Title 2 Chapter 26)* ..... 10
      - Evaluations ..... 10
      - Reviews..... 10
    - *Innovation (Budget Title 2 Chapter 27)* ..... 10
    - *Communication (Budget Title 2 Chapter 28)* ..... 10
      - Institutional Communication..... 11
      - External Communication ..... 11
    - *Audit (Budget Title 2 Chapter 29)* ..... 11
- 4. Appendix: Staff establishment plan ..... 11**

- a) General presentation of the staff policy followed by the JU ..... 11
- b) Staff expenditure justification for 2012 ..... 12
- c) Establishment plan for 2012 and indicative adaptation in the following year 2013 ..... 13

## Budget 2012

Title Chapter	Heading	Appropriations 2012 *	Appropriations 2013 (Estimated)
<b>1</b>	<b>STAFF</b>		
11	STAFF SALARIES	1.276.680	1.428.000
12	STAFF RECRUITMENT	5.062	20.000
14	SOCIAL INFRASTRUCTURE & TRAINING	5.062	15.000
17	MISSIONS & REPRESENTATION	60.746	65.000
	<b>Title 1 - Total</b>	<b>1.347.551</b>	<b>1.528.000</b>
<b>2</b>	<b>BUILDINGS EQUIPMENT</b>		
20	BUILDING & ASSOCIATED COSTS	263.233	280.500
21	INFORMATION TECHNOLOGIES	80.995	100.000
22	MOVABLE PROPERTY	4.050	5.000
23	CURRENT ADMINISTRATIVE EXPENSES	6.075	12.000
24	TELECOMMUNICATIONS	9.112	10.000
26	R&D SUPPORT (EVAL/REVIEW)	303.730	300.000
27	INNOVATION	50.622	50.000
28	COMMUNICATION	232.860	220.000
29	AUDITS	30.373	30.000
	<b>Title 2 - Total</b>	<b>981.049</b>	<b>1.007.500</b>
	Total running costs	2.328.600 **	2.535.500
<b>3</b>	<b>OPERATIONAL ACTIVITIES AND OTHER RUNNING COSTS</b>		
31	SELECTED PROJECTSR&D	55.118.187	75.000.000
	<b>Title 3 - Total</b>	<b>55.118.187</b>	<b>75.000.000</b>
	<b>GRAND TOTAL:</b>	<b>57.446.787</b>	<b>77.535.500</b>

\* Including EFTA contribution (2,6%)

\*\* The objective is to remain within the envelope of 2.200.000 euros (+ EFTA Contribution :2,6%) with an increase to 2.300.000 euros if the context is favourable.

note Following Article 27,7 of the ARTEMIS Financial Rules this budget "became definitive after final adoption of the general budget" and "if is necessary shall be adjusted accordingly"

## 1. INTRODUCTION

---

The Budget contains a forecast of annual expenditure for the following two years and includes the staff establishment plan.

Within this forecast, the estimates of revenue and expenditure for the first of those two years are drawn up in such detail as is necessary for the internal budgetary procedure of each member regarding its financial contributions to the ARTEMIS Joint Undertaking.

## 2. REVENUE

---

### a) *Revenue for R&D Activities*

The JU will receive contributions from the European Commission to support the R&D activities. This contribution will be based on the budget adopted for JTIs in the general Community budget and includes EFTA contribution.

Commitments for JU R&D Activities - 2012 (€)	Estimates for JU R&D Activities - PDB 2013 (in €)
55.118.187 *	75.000.000

\* The amount of 55.118.187 € includes the EFTA contribution to the EU budget. It should be noted that the amounts unspent in the calls 2010 (7.913.264 €) and 2011 (around 3 M€, final amount is not known yet) should be carried over into 2012 and used in priority for the implementation of the call 2012.

### b) *Receipts for running costs*

The JU will receive contributions from ARTEMIS-IA and from the European Commission to support its running costs. For year 2012 the revenues for the running costs will be funded by the European Commission with Euro 1.0 Million and by ARTEMIS-IA with Euro 1.2 Million.

The contribution from the European Community budget as adopted by the budgetary authority will be based on the budget foreseen for JTIs in the general Community budget. Provided that the Community budget is adopted by the budgetary authority without changes, it will constitute a ceiling for the actual Community contribution.

	Budget (M€)	Budget (M€)
Budgetary Year	2012	2013
Planned EC Contribution –commitments-	1.1	1.0
Total Planned. contributions from ARTEMIS-IA	1.2	1.6
<b>Total planned. estimated commitments</b>	<b>2.3</b>	<b>2.6</b>

### *Total Revenues*

Title Article	Heading	Budget 2012	Budget 2013 (Indicative)
2	REVENUE OF ARTEMIS JU (1)		
20	REVENUES AND CONTRIBUTIONS	57.446.187	77.535.500
	<b>GRAND TOTAL:</b>	<b>57.446.187</b>	<b>77.535.500</b>

## 3. EXPENDITURES

---

### a) *Research and Development (R&D) activities (Budget Title 3)*

A main objective of the ARTEMIS Joint Undertaking is to define and implement a Research Agenda for the development of key technologies for Embedded Computing Systems. The activities for the implementation of the Research Agenda (**R&D Activities**) will be supported notably by awarding public funding to participants in selected projects following competitive calls for proposals. Public funding for the R&D Activities will consist of a financial contribution from the ARTEMIS Joint Undertaking and national financial contributions from the ARTEMIS Member States. The financial contribution of the ARTEMIS Joint Undertaking to R&D Activities will be provided at a percentage of the R&D costs incurred by participants in such activities.

The Work Programme for 2012 comprises two separate parts: a first one based on 8 sub-programmes, and a second one aimed at establishing long-lasting innovation eco-systems around key industrial domains, themselves based around clusters of previously successful ARTEMIS projects (AIPP). The Community contribution to the budget for R&D activities is financed from the general budget of the EC in the form of transfers made to the JU. For 2012 and 2013 the foreseen budgets of the Calls are provided in the following table<sup>2</sup>:

---

<sup>2</sup> For R&D activities only the Community contribution enters the budget of the Joint Undertaking as the financial contribution of ARTEMIS Member States to projects are disbursed directly to participants by these States.

<b>Budgetary Year</b>	<b>Budget of Call 2012 (€)</b>	<b>Budget of Call 2013(estimated) (€)</b>
Total EC Contribution	55.118.187 *	75.000.000
Total contributions from ARTEMIS Member States <sup>3</sup> **	99.212.737	136.000.000
<b>Total budget of Calls</b>	<b>154.330.924</b>	<b>211.000.000</b>

\* Provided that the Community budget is adopted by the budgetary authority without changes, and including EFTA contribution.

\*\* Final figures will be confirmed by the Member States in January 2012.

## **b) *Running Costs***

### Title 1: Staff

- *Staff (Budget Title 1 Chapter 11)*

This appropriation is intended to cover the cost of remuneration of temporary and contractual staff, in accordance with the Staff Regulations<sup>4</sup>. It includes the costs of the employers' social security contributions in accordance with the Staff Regulations of officials and conditions of employment of other servants of the European Communities.

- *Recruitment costs (Budget Title 1 Chapter 12)*

This appropriation is to cover the expenditure arising from the search for suitable candidates and subsequent administration costs of the recruitment of new staff members.

- *Training (Budget Title 1 Chapter 14)*

This appropriation is to cover the training expenses for the staff.

- *Missions and representation (Budget Title 1 Chapter 17)*

The missions and representation appropriation is intended to cover expenditure for transport, the payment of daily mission allowances and other expenses incurred by staff in the interest of the service.

<sup>3</sup> At least 1,8 times the Community's financial contribution.

<sup>4</sup> Staff Regulations of Officials of the European Communities and the Conditions of employment of other servants of the European Communities (OJ L 56, 4.3.1968) as amended by Regulation (CE, Euratom) no. 723/2004 of 22 March 2004 (OJ L 124, 27.4.2004) and last corrected by Corrigendum (OJ L 051, 24/02/2005).

## Title 2: Building and Equipment

- *Building and associated costs (Budget Title 2 Chapter 20)*

The appropriation includes the costs related to rental of the office space and related charges.

- *IT equipment and services (Budget Title 2 Chapter 21)*

This appropriation is intended to cover the purchase of computing and other similar electronic office equipment and hardware as well as the installation, configuration and maintenance of this equipment; the procurement and maintenance of program packages and software necessary for the normal operation of the Joint Undertaking; the expenditure on services contracts for analysis, programming and technical assistance necessary for the JU, the cost of external services contracts to manage and maintain the data and systems, training and other support activities<sup>5</sup>. SLAs with the Commission, necessary for the use of the ABAC accounting system (SLA with DG BUDG), as well as for the provision of IT equipment/services (SLA with, DIGIT, REA, RTD and/or INFOS) are in place. This line also includes costs specific to the secure data communication needs of the JU to access the ABAC accounting system.

- *Movable property (Budget Title 2 Chapter 22)*

This chapter includes the necessary resources to cover the purchase, maintenance and replacement of furniture for the White Atrium building, either shared with the other Joint Undertakings, or for ARTEMIS only.

- *Current administrative expenses (Budget Title 2 Chapter 23)*

This chapter includes costs of office supplies, stationery and other consumables necessary for the operation of the office as well as any costs incurred for any mandatory translations.

- *Telecommunications (Budget Title 2 Chapter 24)*

This chapter includes fixed and mobile phones, fax and other telecommunication expenditures

---

<sup>5</sup> The costs of IT hardware and information systems are directly related to the staff working in the JU. As they are annual costs, we consider as a basis of calculation the staff costs on a yearly basis for accounting purposes because the costs of equipment are allocated on a yearly basis.

- *R & D Support (Budget Title 2 Chapter 26)*

- *Evaluations*

*These are the activities for ensuring the proper reception and evaluation of project proposals submitted in response to Calls published by the JU.. All other activities (selection and reimbursement of experts, management of the process, etc.) are carried out by the JU. The evaluation and selection procedures to be used for the Call 2012, and consequently the associated cost structures, are the same as those used in the previous calls (2-step process, with mandatory Project Outline and Full Project Proposal phases).*

Estimation of the number of proposals to be evaluated:

	Project Outlines	Full project proposals
2012	90	60
2013	90	60

Costs associated with evaluation fall into two general categories – Evaluation Logistics and reimbursement of Experts.

- *Reviews*

Estimation of number of reviews:

<b>2012</b>	<b>2013</b>
40	40

- *Innovation (Budget Title 2 Chapter 27)*

In order for ARTEMIS to achieve its ambitious objectives it needs to promote the creation of environments that favour innovation, certain activities that are not directly R&D related (i.e. not fundable from the Operational budget) are foreseen. The purpose is to ensure that the results of the R&D efforts engaged by all stakeholders translate into new products and market opportunities in a fast and effective way. ARTEMIS should ensure that there is a clear and obvious value chain from the first steps of research all the way down to designing products and services.

- *Communication (Budget Title 2 Chapter 28)*

Communication activities of ARTEMIS address on the one hand communication to the ARTEMIS community and on the other, special communications activities toward the European institutions that are vital to the existence of the JU. The communication strategy is

defined by the ARTEMIS-JU Office, while its execution forms the subject of an SLA with ARTEMIS-IA.

- *Institutional Communication*

This appropriation covers the cost of events for the information of institutional stakeholders such as the European Parliament, the Councils, etc.

- *External Communication*

This appropriation covers costs related to all communications tasks addressing the research Communities, the Industry and the public at large.

- *Audit (Budget Title 2 Chapter 29)*

This appropriation is covering the possible costs for internal audit capability and ex-post audits.

#### **4. APPENDIX: STAFF ESTABLISHMENT PLAN**

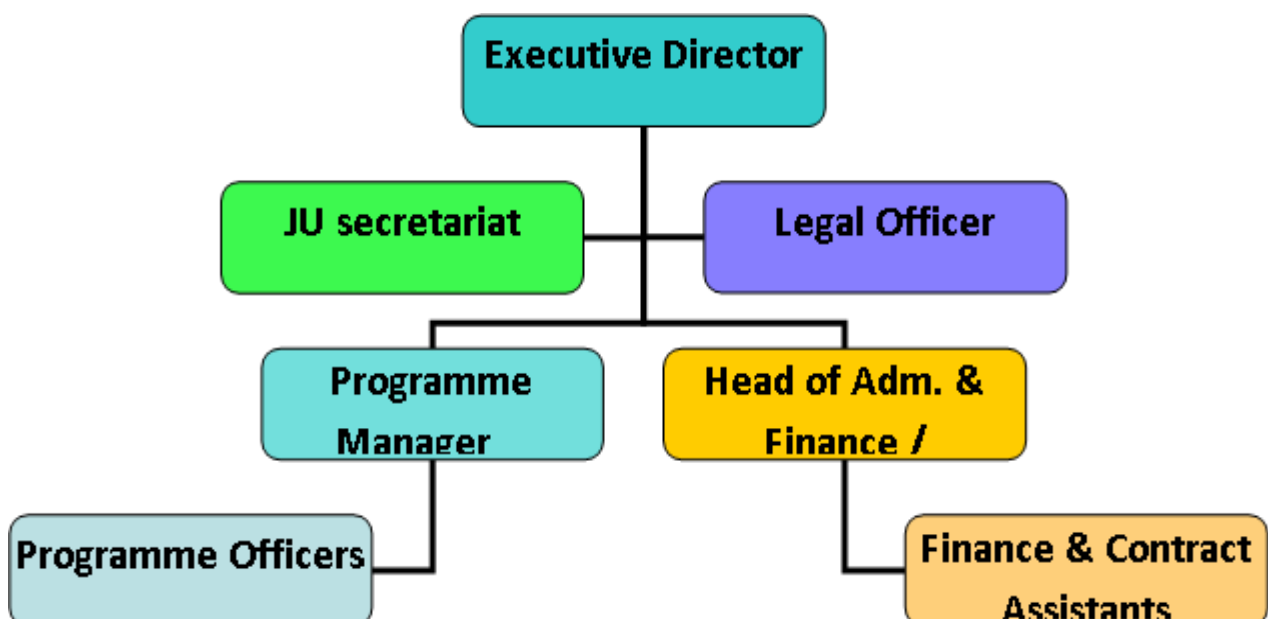
---

In order to complement the Multiannual Staff Policy Plan for the ARTEMIS Joint Undertaking (JU), the Staff establishment plan gives an overview and forecast of annual staff expenditure for the following two years, 2012 and 2013.

**a) General presentation of the staff policy followed by the JU**

From a general point of view, the ARTEMIS Joint Undertaking offers contract agent (CA) contracts for clerical and supportive tasks and temporary agent (TA) contracts for officer and/or management positions (AD grades).

### **Organisation Chart**



**Executive Director (TA-AD14)**

The Executive Director is the chief executive responsible for the day-to-day management of the ARTEMIS Joint Undertaking and its legal representative. He shall perform his tasks with independence and shall be accountable to the Governing Board.

**Head of Administration & Finance (TA-AD11)**

The Head of Administration & finance co-ordinates, facilitates and implements the administrative and financial work of the Joint Undertaking allowing that objectives are achieved smoothly and that the expected results are delivered on time. He is also the accounting officer of the JU as appointed by the Governing Board.

**Programme Manager (TA-AD 11)**

The Programme Manager supports the Executive Director in all his work and decisions, upon request and advises and assists the Head of Administration & Finance in his mission in respect of technical issues. This includes coordination of the approval of the work programme, preparation of calls for proposals/tenders and actively informing the research constituency.

**Programme Officer (TA-AD8)**

The Programme officers organise and are involved in the evaluation of proposals (selection of experts, logistics etc.), manage the process of selection of projects, monitor and review the execution of grant agreements, carry out project reviews and ensure compliance with the prevailing rules and regulations. They also negotiate strategic, scientific, managerial and financial aspects of research contracts and amendments.

**Legal Officer (TA-AD8)**

The legal officer advises and assists the Executive Director, the Programme Manager and the Head of Administration & Finance in their missions in respect of legal issues, including preparation and follow up of the administrative arrangements with the national funding authorities, controlling the application and potential revision of the JU financial rules and of the grant agreements, and controlling the application and potential revision of the implementing rules for the staff. She is also the liaison with DG HR, DG Legal Service and any other relevant Directorate-General.

**b) Staff expenditure justification for 2012**

Human Resources	2011		2012	2013
	Authorised under the EU Budget	Actually filled as of 31/12/2011	Requested	Expected
Establishment plan posts: AD	8	8	8	8
Establishment plan posts: AST	0	0	0	0
<b>Total Establishment plan posts</b>	<b>8</b>	<b>8</b>	<b>8</b>	<b>8</b>
Contract Agents	7	5	7	7
Seconded National Experts	0	0	Pm.	Pm
<b>Total staff</b>	<b>15</b>	<b>13</b>	<b>15</b>	<b>15</b>

*External personnel detail*

Contract Agents	Authorised 2011	Recruited as of 31/12/2011	2012 estimate	DB 2013 estimate
Function Group IV	0	0	0	0
Function Group III	3	3	4	4
Function Group II	4	2	3	3
Function Group I	0	0	0	0
<b>Total</b>	<b>7</b>	<b>5</b>	<b>7</b>	<b>7</b>

Seconded National Experts	Authorised 2011	Recruited as of 31/12/2011	2012 estimate (*)	DB 2013 estimate (*)
<b>Total</b>	<b>0</b>	<b>0</b>	<b>Pm</b>	<b>Pm</b>

(\*) **Seconded national experts:** this possibility is foreseen in Article 7(7) of Council Regulation 74/2008. The JU might consider using this possibility in 2012 or 2013.

**Staff costs:** For 2012 the staff costs are calculated based on historical data available as follow: for the temporary agents is estimated in 1.016.000€ and for contractual agents in 245.000€.

*c) Establishment plan for 2012 and indicative adaptation in the following year 2013*

Grade	2012			Year 2013											
	Establishment plan			Staff evolution						Organisational			Establishment		
	PERM	TEMP	TOTAL	Promotion / Career advancement in global			Turn-over in global figures (departures/arrivals)			New posts			Provisional planning		
				Officials	TA - LT	TA - ST	Officials	TA - LT	TA - ST	Perm	Temp - LT	Temp - ST	Perm	Temp	Total
AD16	0	0	0										0	0	0
AD15	0	0	0										0	0	0
AD14	0	1	1										0	1	1
AD13	0	0	0										0	0	0
AD12	0	0	0										0	0	0
AD11	0	2	2										0	2	2
AD10	0	0	0										0	0	0
AD9	0	0	0			3							0	3	3
AD8	0	5	5										0	2	2
AD7	0	0	0										0	0	0
AD6	0	0	0										0	0	0
AD5	0	0	0										0	0	0
<b>Total AD</b>	<b>0</b>	<b>8</b>	<b>8</b>	<b>0</b>	<b>0</b>	<b>3</b>	<b>0</b>	<b>0</b>	<b>0</b>	<b>0</b>	<b>0</b>	<b>0</b>	<b>0</b>	<b>8</b>	<b>8</b>
AST11			0										0	0	0
AST10			0										0	0	0
AST9			0										0	0	0
AST8			0										0	0	0
AST7			0										0	0	0
AST6			0										0	0	0
AST5			0										0	0	0
AST4			0										0	0	0
AST3			0										0	0	0
AST2			0										0	0	0
AST1			0										0	0	0
<b>Total AST</b>	<b>0</b>	<b>0</b>	<b>0</b>	<b>0</b>	<b>0</b>	<b>0</b>	<b>0</b>	<b>0</b>	<b>0</b>	<b>0</b>	<b>0</b>	<b>0</b>	<b>0</b>	<b>0</b>	<b>0</b>
<b>Overall Total</b>	<b>0</b>	<b>8</b>	<b>8</b>	<b>0</b>	<b>0</b>	<b>3</b>	<b>0</b>	<b>0</b>	<b>0</b>	<b>0</b>	<b>0</b>	<b>0</b>	<b>0</b>	<b>8</b>	<b>8</b>